

# *"The InForMer"*

## *IFM, Inc.'s Newsletter*

*Industrial Fluid Management, Inc.*



### Inside this issue:

New Employees	1
Company Meeting	2
Welcome Babies	2
New Building	3
Employee Corner	3
Membrane Softening Plant	4
Acrylic Emulsion Filtration Plant	5
Fun Water Facts	6

### Welcoming New Employees

We would like to start off this newsletter by introducing our six new employees that have joined our team since last spring.

**Bob Vance** - started working with us in August. His previous work experience includes performing various duties such as pipefitting, plumbing, equipment installation, pump setting, and electrical controls with building water & wastewater facilities. Prior to that, he also took care of city water, wastewater, and collections systems. Bob has always worked in the water / wastewater industry. He and his wife have a son and in his free time he loves to fish and is a huge fan of the Detroit Tigers and the Lions.

**Joe Ross** - came to work with us in September. He currently has an OEPA Class 3 Water and a Class 2 Wastewater Certification and is anticipating taking the Class 3 Wastewater exam soon. His ultimate professional goals are to have a Water and Wastewater 4 Certification and to finish his Bachelors degree. He and his wife have two children that are in the U.S. Coast Guard and a third that is in college. Joe's two main interests are eschatology and his fruit and vegetable gardens.

**Randy Wilson** - works with us part-time in our Hilliard office. He will soon graduate with an Associates degree in Environmental Science, Safety and Health and plans on continuing his education. He enjoys sports and the outdoors and is an avid gun collector and enjoys taking his children to the gun range.

**Kim Isaac** - started working with us in November of 2013 and was hired full-time in May of 2014. She graduated Magna Cum Laude from BGSU with a Bachelor of Science degree in Environmental Science and a specialization in Watershed Management. She now works as a lab technician in our wastewater lab and is OEPA-certified to run Total Coliform samples in our new drinking water lab. In her spare time, Kim enjoys listening to music, watching and playing sports, and visiting her hometown of Cleveland, OH. In the future she hopes to grow as a lab technician and help clean up natural waterways across the US.

**Hope Boden** - started working with us in February and previously worked in the medical field and as a journeyman electrician. She is married and has 2 children; a son who is a specialist in the Army and currently stationed in Kuwait and a daughter who is a high school senior. In Hope's spare time, she enjoys outdoor activities and loves to paint, sew and craft.

**Ross Austermiller** - started working with us in November. He comes from a background in industrial maintenance and machine building. In his free time, he enjoys boating, riding his Harley, shooting guns and having fun with his friends or working on his house.

## IFM Company Meeting

On September 17th, IFM held a company meeting at the McClure office to update employees on projects we have been working on, what's coming up for us in the near future and to complete some safety training. Twenty-three employees were present, and for the first time, we set up tables and chairs in our back shop area because we had outgrown meeting in our front office. The safety topic was Chemical Handling & Hazardous Communication led by Neil Pry. Following the meeting, we had a cookout and surprise baby shower for employees Michelle McKeen and Aubrie Koontz.



## Welcome Babies!!!



Since the article above took place, both Michelle and Aubrie have had their babies. Michelle & her husband, Kirby, had a little boy named Mason Craig on October 5th. Aubrie & her husband, Kerry, had a little girl named Lyra Marie on November 25th. We are very excited about our little additions at IFM!





## IFM New Storage Building



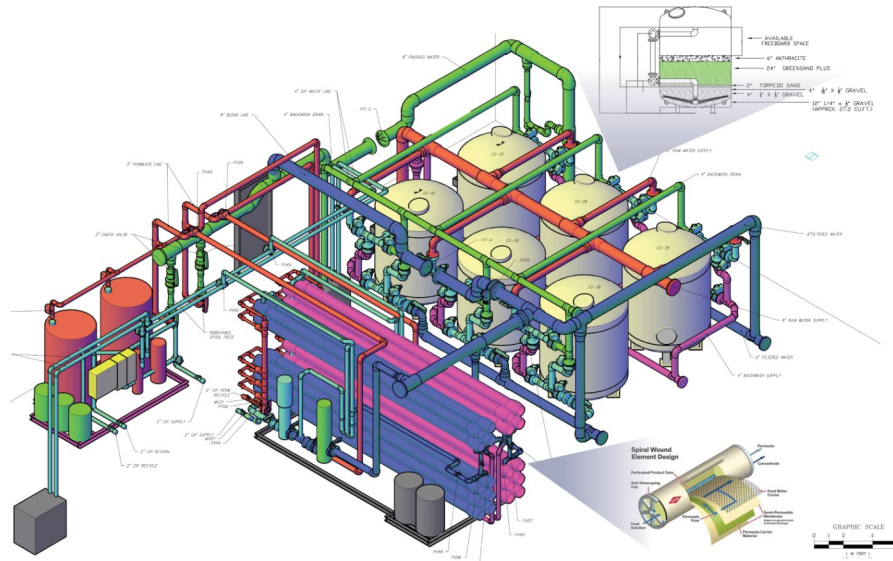
In September, IFM commissioned construction of a 5,000 square foot storage building to be erected on our McClure “campus.” The space will be used to store materials, supplies and tanks to better serve our clients. The builder has promised construction to be completed by Christmas...he just didn’t say what year.

## Employee Corner

In this newsletter issue we feature Dalton Gordon in our employee corner. Dalton started with IFM in 2007 through an internship while earning his undergraduate degree from The Defiance College. It was quickly realized that Dalton was very hands-on and mechanical and he was hired for a full-time position. Since graduating college with a Bachelor’s in Science, Dalton has become a Class 1 Ohio Certified Wastewater Operator and also holds a Class 1 Water Certification as well. Dalton and his wife Brooke reside in Defiance with their 2 dogs. Dalton is an outdoors man: he’s an avid hunter, enjoys golfing and wearing disguises in Menard’s.



## IFM Successfully Manages the Design Build of a Municipal Membrane Softening Plant



Industrial Fluid Management, Inc. working with Kirk Brothers Construction and Poggemeyer Design Group, recently started up a new 0.7 MGD membrane softening plant. The project was successfully designed, OEPA approved, installed and started up in under 12 months.

IFM not only provided major treatment equipment for the project, but also incorporated plant-wide controls to work with existing and previously installed components. This includes signaling existing wells to operate, controls of the new low service system and pumps, greensand filtration, membrane softening, clean in place system and associated chemical feed components. The controls monitor all parts of the treatment system including flow, water quality and operating pressures.

The system designed is currently reducing total dissolved solids from 1,200 to less than 50 mg/l, Iron from 0.3 to non-detectable levels and total hardness from 800 mg/l to less than 20 mg/l.



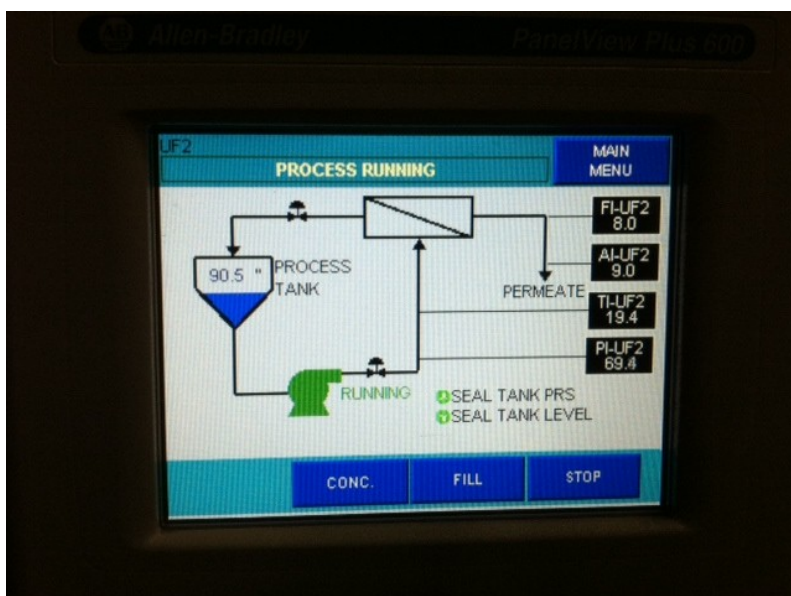


## Acrylic Emulsion Filtration Plant



A major manufacturer of acrylic emulsions contracted with IFM to design and build a new upgraded, automatic ultrafiltration system. System enhancements were included in the design that upgraded in tank pumping design to ANSI pump with new improved seal design using seal plan 53A to combat fluid's tendency to congeal and cause short mechanical seal life. System designed with automatic CIP features, permeate recycle and advanced alarming and networking with site's DCS system for remote monitoring.

IFM was able to design, build and startup this new system working with site personnel during shutdown to seamlessly implement this upgrade and filter and concentrate the fluids to enable sewerable discharge. Percent solids of this fluid are concentrated to 30% + solids content during batch operations.





## *Industrial Fluid Management, Inc.*

---

2926 US Highway 6  
McClure, OH 43534  
4637 Northwest Pkwy

Phone: 419-748-7438/866-435-4436  
Fax: 419-748-7460

4637 Northwest Pkwy.  
Hilliard, OH 43026  
Phone: 614-527-3813  
Fax: 614-876-2502

Uniquely Qualified to Address Your  
Wastewater and Water Needs

---

**WE'RE ON THE WEB!**  
**WWW.IFMENVIRO.COM**

---

## **Fun Water Facts**

- 🔵 Human brains are 75% water.
  - 🔵 Human bones are 25% water.
  - 🔵 Human blood is 83% water.
  - 🔵 75% of a chicken is water.
  - 🔵 80% of a pineapple is water.
  - 🔵 95% of a tomato is water.
  - 🔵 73% of an egg is water.
  - 🔵 75% of a potato is water.
  - 🔵 95% of a cucumber is water.
  - 🔵 95% of lettuce is water.
  - 🔵 30% of bread is water.
  - 🔵 70% of an elephant is water.
  - 🔵 Each day the sun evaporates a trillion tons of water.
  - 🔵 A single tree will give off 70 gal. of water per day in evaporation.
  - 🔵 An acre of corn will give off 4,000 gal. of water per day in evaporation.
-